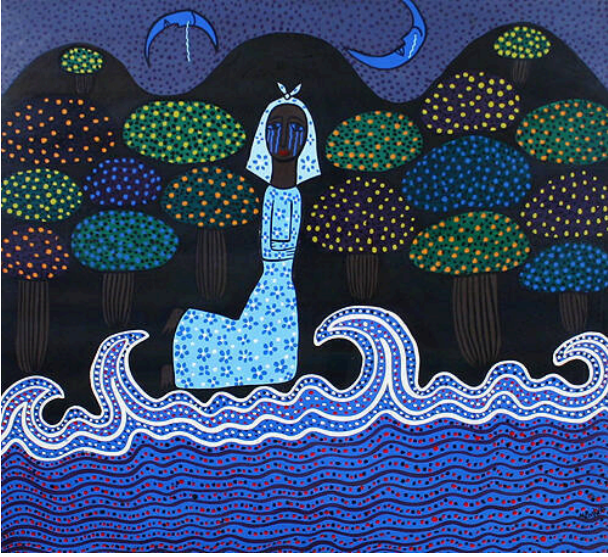


# Basic Detail Report

---



## Untitled

### Date

ca. 1965

### Primary Maker

Manuel Mendive

### Medium

acrylic on paper

### Dimensions

Sight: 20 3/4 x 22 7/8 in. (52.7 x 58.1 cm) Framed: 26 3/4 x 28 3/4 x 1 1/8 in. (67.9 x 73 x 2.9 cm)