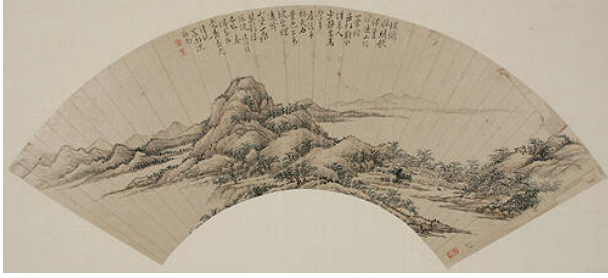


Basic Detail Report



Landscape

Date

Spring 1809

Primary Maker

Shen Shoushang

Medium

ink and colors on paper

Description

The Chinese and Japanese regarded the landscape as one of the most important methods of artistic expression. Landscape painting grew out of the Chinese Daoist view of man's place in the natural universe. Nature was all encompassing and man was but one small part in that design. The fan shape is most effectively used in the successful execution of this composition. The arrangement of the tall distant mountain peaks in the background leading gradually to the lower hills in the foreground also strongly suggest a perspectival view of the landscape. This method of achieving perspective began to be employed in China by the Tang Dynasty and was perfected during the Northern Song Dynasty (960-1127). The inscription on the painting is a description of the painting. Like other fan paintings, it is inscribed as a gift or presentation from one scholar-friend to another.

Dimensions

Overall: 11 x 22 3/4 in. (27.9 x 57.8 cm)