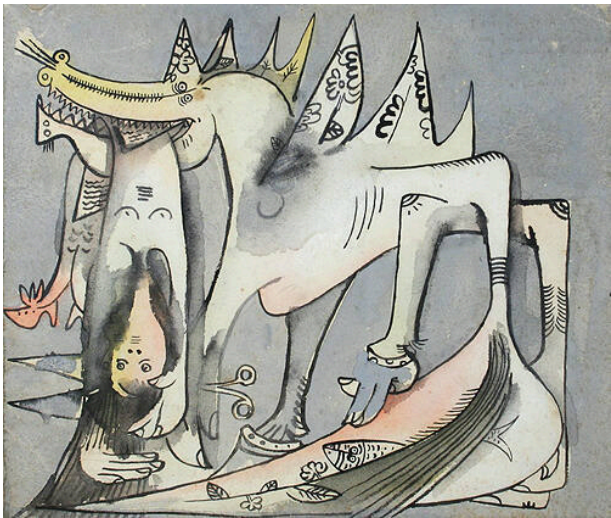


# Basic Detail Report

---



× 20 1/8 × 3/4 in. (41 × 51.1 × 1.9 cm)

## Untitled

**Date**

1950

**Primary Maker**

Wifredo Lam

**Medium**

watercolor on paper

**Dimensions**

Sight: 9 5/8 x 11 3/8 in. (24.4 x 28.9 cm) Framed: 16 1/8