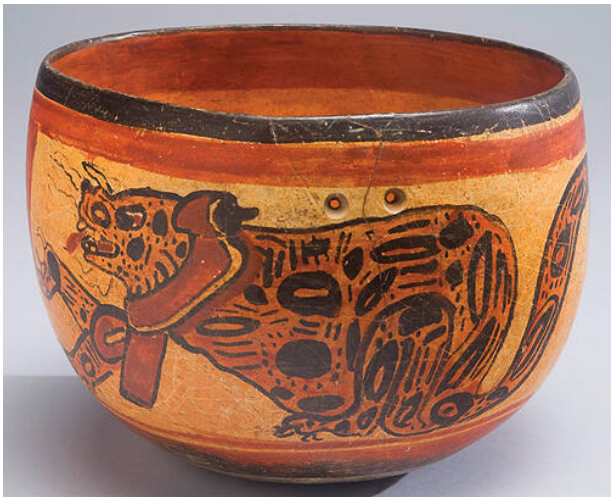


Basic Detail Report



Bowl

Date

ca. 600-900

Primary Maker

Maya (archaeological culture)

Medium

pottery and paint

Description

The favorite colors for Maya ceramic artists are used to set off an image of a portly jaguar. Jaguars appear frequently in Maya art as symbols of royal power and divine authority. This jaguar has a shawl or other ornamentation around his neck, which may indicate he is the deity known as the Water Lily Jaguar, an important fertility god of the Classic Maya, who is often shown as a huge cat who protects the members of certain royal families. Two small drill holes show this vessel was repaired in antiquity.

Dimensions

Overall: 5 1/4 x 7 1/8 x 7 in. (13.3 x 18.1 x 17.8 cm)